

ASEAN-Maybank Scholarship (AMS)

Programme Roll-out Plan

28 February 2022



Humanising Financial Services



Programme Overview

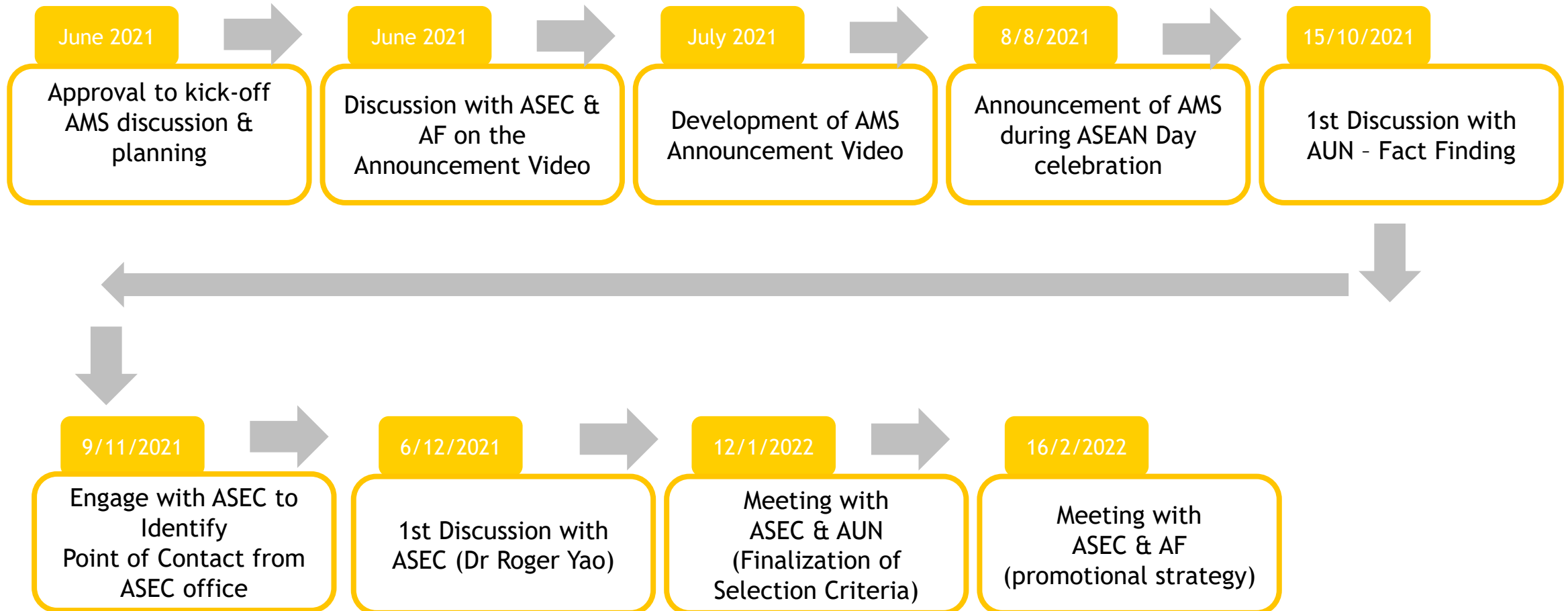


- The AMS programme is a partnership between Maybank Foundation and ASEAN Secretariat designed to provide young, talented and deserving ASEAN nationals with full scholarships and the opportunity to pursue their undergraduate education in prestigious universities outside their own countries, but within the ASEAN region.
- Through ASEAN Foundation and in cooperation with the ASEAN University Network, the focus will initially be on placing them in top public universities in Malaysia, Indonesia, Singapore, Thailand and the Philippines for 2022 pilot and gradually expanding it to the remaining ASEAN countries.
- Maybank Foundation will provide the funding for the scholarships, which includes:
 - a) Coverage of tuition fees (full throughout duration of study).
 - b) Allowance for monthly stipend + accommodation.
 - c) Settling-in allowance.
 - d) Return economy class air passage.
 - e) Subsidised medical benefit (out-patient) and accident insurance coverage.
 - f) Provisions for laptops.
 - g) Others i.e. Visa, Medical Check-up, Covid-19 Screening and Quarantine Cost.
- A key differentiator and value proposition of the AMS will be the internship opportunities. Scholarship recipients will have the opportunity to internship either at the ASEAN Secretariat, ASEAN Foundation, or Maybank offices regionally. In addition, they will also be able to participate as volunteers in all Maybank Foundation's programme initiatives together with ASEAN Secretariat and ASEAN Foundation.

AMS Progress Timeline



- The timeline below shows the progress of the programme since the official announcement.



AMS 2022 Timeline Activity



January

1. Procurement - Sourcing for Database Management System (Submission).
2. Finalization of AMS Selection Criteria.
3. Drafting of Scholarship Agreement.
4. Drafting of AMS BOC Paper

February

1. Meeting with ASEC & AF - Discussion on Roadshow and Publicity.
2. Meeting with IC & Branding - Discussion on Advertising or Comms.
3. Drafting of Advertising Materials (Empcomm, Ads, Poster, Social Media).
4. Finalization of BOC Paper.

March

1. Finalization of Advertising Materials (Empcomm, Ad Poster, Social Media).
2. Procurement - Sourcing for Database Management System (Approval).
3. Call for Application via Maybank, ASEC, AUN, AF, Universities (Website, Portal, Social Media).
4. Finalization of Scholarship and Guarantee Agreement with Declaration Form.
5. AMS Committee Selection, Appointment, and Approval.

April

1. Application Close.
2. Screening of Applicants and Online Assessment.
3. Assessment Centre and Final Interview.
4. Calibration, Selection and Approval by AMS Committee, followed by GPCEO.
5. Drafting of BOC Paper for May BOC Meeting (Selection Approval).

AMS 2022 Timeline Activity



May

June

July

August

1. Finalization of BOC Paper and BOC Meeting.
2. Printing of Scholarship and Guarantee Agreement with Declaration Form.
3. Preparation for Scholarship Agreement Briefing and Signing.

1. Finalization of Plan for the AMS Award Ceremony on ASEAN Day.
2. Logistics Arrangement - Recipients and the Guarantors (Travel and Accommodation).
3. Drafting of Press Release and Empcomm with Preparation of Press Conference.

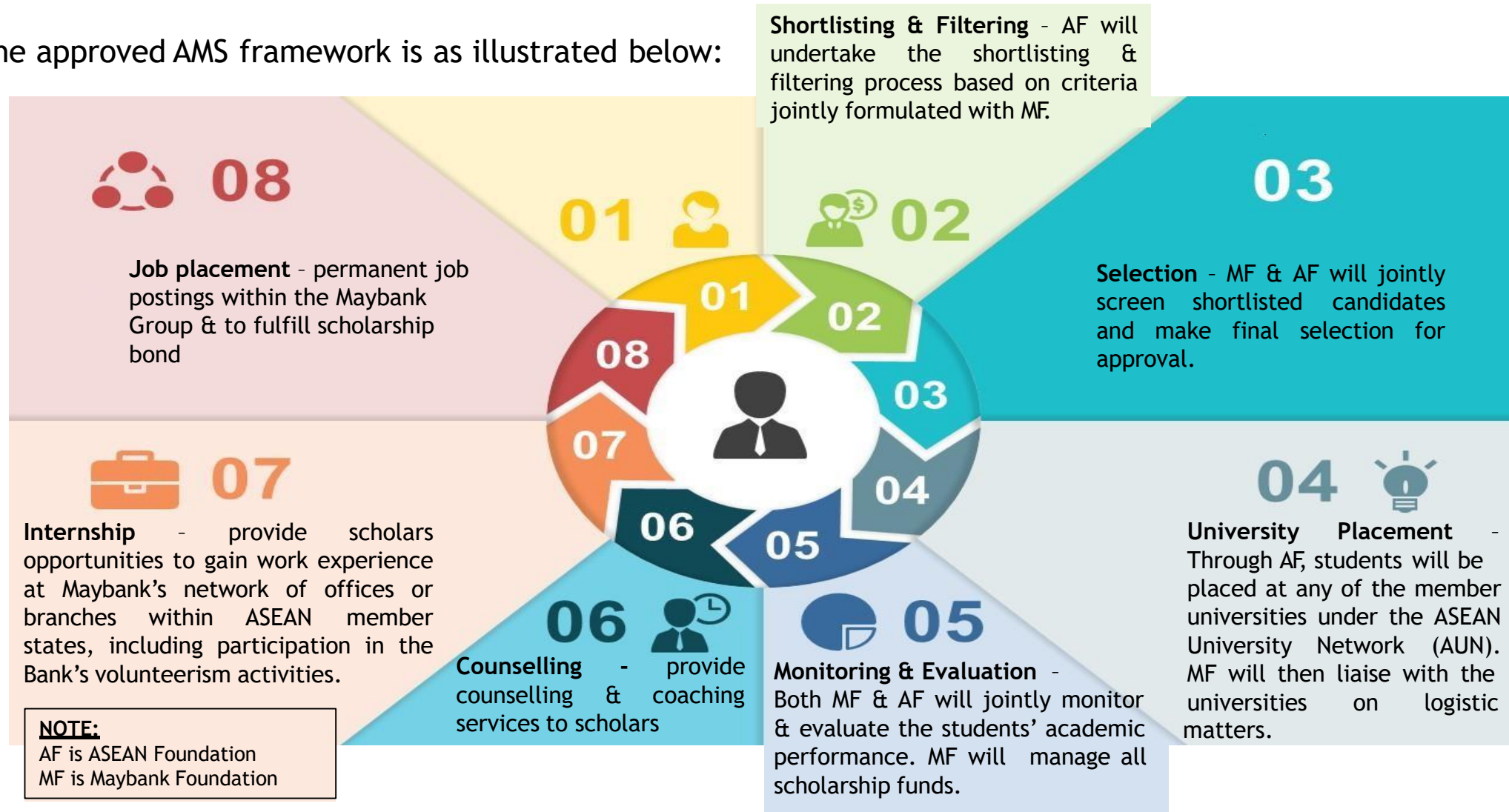
1. Finalization of Press Release, Empcomm, and Press Conference.
2. Preparation of Scholarship Offer Letter and Financial Affidavit.
3. Invitation of Recipients - Attending the Award Ceremony.

1. AMS Award Ceremony on ASEAN Day.
2. Post-Event i.e. Document Stamping, Reimbursement, and Courier of Stamped Documents.
3. Preparation for Induction Programme.

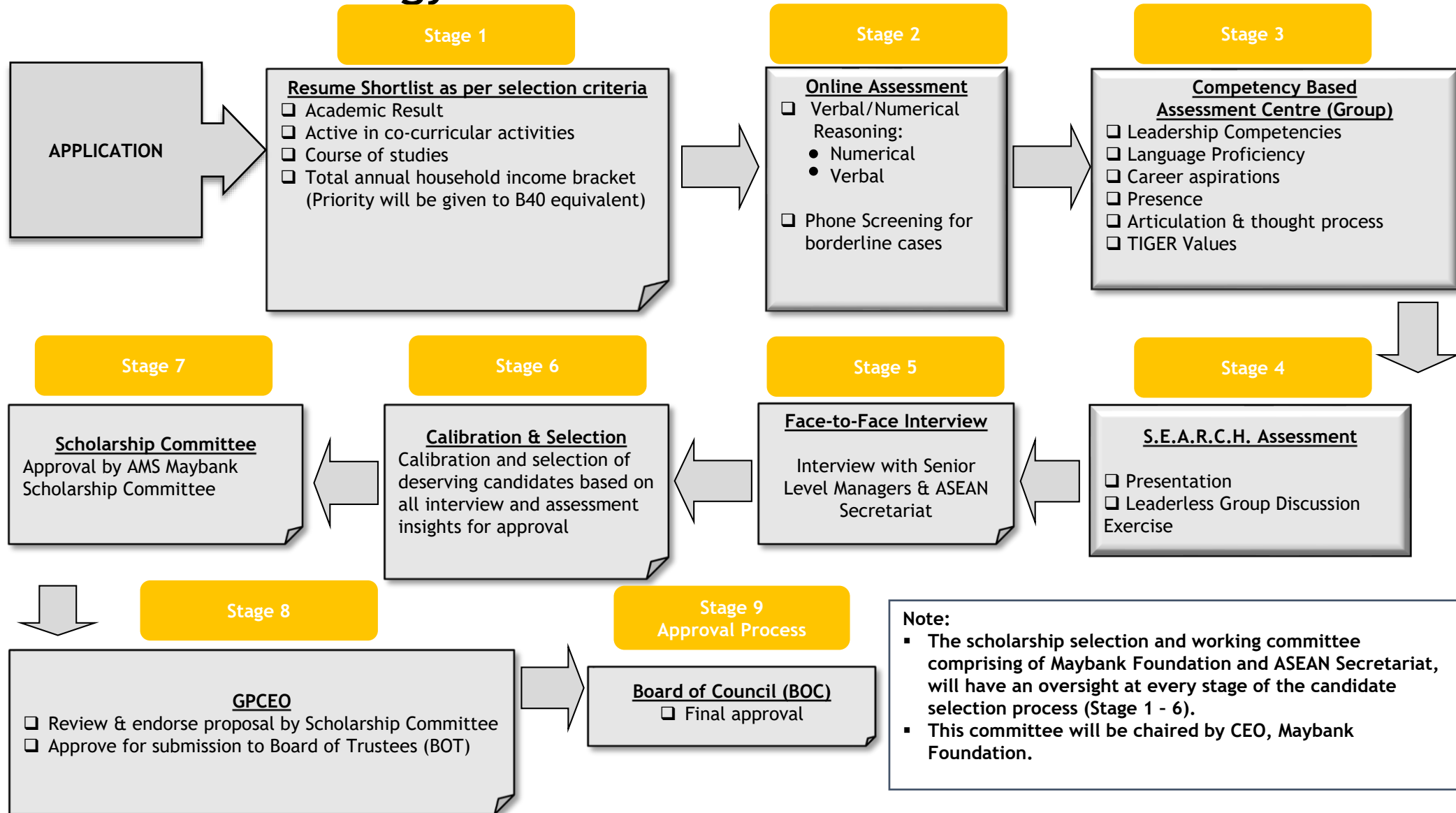


Framework and Selection Process

- The approved AMS framework is as illustrated below:



Selection Methodology & Governance



Selection Methodology & Governance (continue)



TOOLS	Verbal Ability Reasoning	Numerical Ability Reasoning	Competency Based Interview	S.E.A.R.C.H. Assessment
Assessment parameters	<ul style="list-style-type: none"> • Ability to comprehend written information • Ability to analyze logic of written argument 	<ul style="list-style-type: none"> • Ability to draw logical inferences from numerical data • Ability to work with numbers and data presented in graphs, diagrams 	<ul style="list-style-type: none"> • Communication skills • TIGER values • Leadership potential • Problem solving 	<ul style="list-style-type: none"> • Leadership skills • Communication skills • Analytical skills • Problem solving ability • Core values
Benchmark	40 th percentile and above	50 th percentile and above	Recommendation by panel	15 and above

AMS Selection Scorecard



PRIORITY	CRITERIA	PERCENTAGE (Weightage)	Ratings					
			1	2	3	4	5	
ACADEMIC	PRE-University (Diploma / Foundation or Equivalent)	30%	3	3.25	3.5	3.75	4	
	Score			Pass	Credit	Distinction	High Distinction	
	CGPA		3	3.25	3.5	3.75	4	
	Grading		AAB	A*AB	A*A*B	A*AA	A*A*A -A*A*A*	
	Percentage		90-92%	93-94%	95-96%	97-98%	99%-100%	
	International Baccalaureate (IB)		50-59	60-69	70-79	80-89	90-100	
	High School Final Exams	English	5%	E and below	D	C	B	A
		Maths	5%	E and below	D	C	B	A
		Arts /Science	5%	E and below	D	C	B	A
	English Proficiency	IELTS	10%	BAND 6	BAND 7	BAND 8	BAND 9	BAND 10
		TOEFL		85-90	91-94	95-98	97-99	100
MUET		Band 1		Band 2	Band 3	Band 4	Band 5	
EXTRA-CURRICULAR ACTIVITIES	10%	Ordinary member including sports, Uniformed Units (scout, cadet, PBSM, etc)	Secretary or related	Vice President, Deputy, Treasurer or equivalent	President / Team Lead	Reputable or Recognised National or International Awards, Honours or Prizes		
SOCIAL ECONOMY	FAMILY STATUS	15%	-	-	With parents	Single Parents	Orphans (stay at orphanage/guardian)	
	TOTAL HOUSEHOLD INCOME	10%	-	-	-	M40 Equivalent to each country household income bracket	B40 Equivalent to each country household income bracket	
	DEPENDENTS/SIBLINGS	10%	1-2 siblings	3-5 siblings	6-7 siblings	8-9 siblings	>10 siblings	
TOTAL		100%						

AMS Selection Scorecard (continue)



PRIORITY	CRITERIA	PERCENTAGE (Weightage)	Ratings				
			1	2	3	4	5
PERFORMANCE	ONLINE ASSESSMENT	30%	1	2	3	4	5
	SELF INTRODUCTION VIDEO + ESSAY WRITE-UP	15%	1	2	3	4	5
	BUSINESS CASE ASSESSEMENT	35%	1	2	3	4	5
	INTERVIEWS	20%	1	2	3	4	5
TOTAL		100%					

Thank You



Humanising Financial Services

